



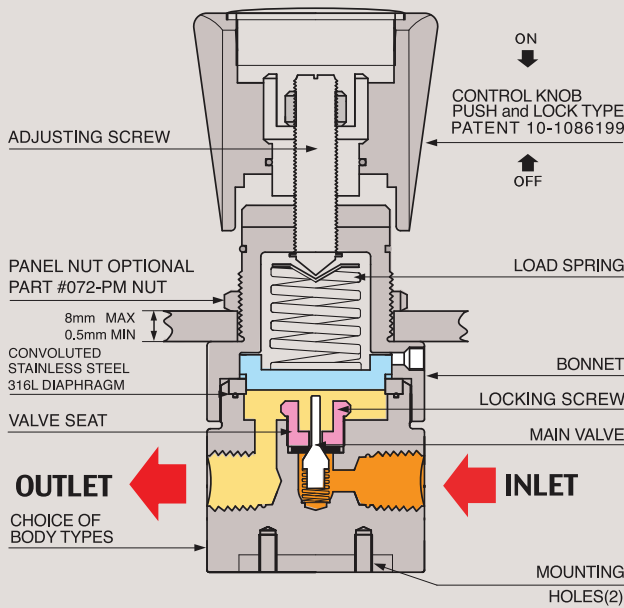
072 SERIES



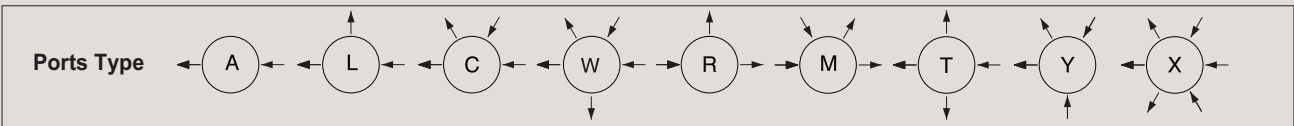
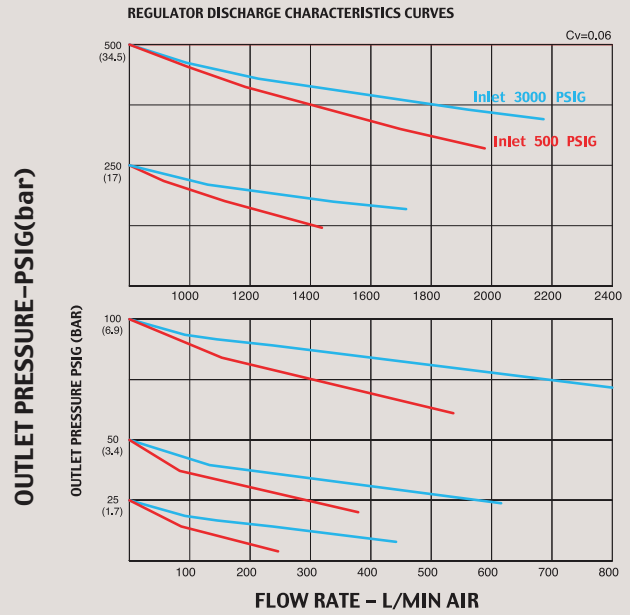
Single Stage Low Pressure Regulators



FUNCTIONAL SCHEMATIC



FLOW CHART



Single Stage Low Pressure NPT type (1/4")

072시리즈는 가스실린더 및 정밀 산업에서 가장 많이 필요로 하고 가장 많이 사용되는 1/4" NPT type 1단 Pressure Reducing Regulator 입니다.

- 본체와 내부의 모든 부품이 Stainless Steel 316L로 제작된 072S 모델은 가스실린더 및 일반가스 라인, Bulk Gas Line, 실험실, 분석용 특수 가스, 또는 고순도 가스, 미생용 가스, 그리고 부식성 기체와 액체 등에 모두 사용할 수 있도록 제작된 제품이며 Cv=0.06 또는 Cv=0.2중 선택 가능합니다.
- 입구 압력은 3000psig(210bar)이고 출구 압력은 모델에 따라 5psig(0.3bar)에서 최대500psig (35bar)까지 사용할 수 있으며, 용도에 따라 2-ports, 3-ports, 4-ports, 5-ports, 6-ports 등 다양하게 선택, 사용할 수 있습니다.
- 사용 중 가스라인이나 외부의 미세 진동 등으로 인하여 초기 압력 셋팅 값이 미세하게 변동하는 현상을 완전히 해결한 당사 Push and Lock 조절 손잡이 (당사 특허 #10-1086199)를 적용하여 사용하기에 더욱 편리합니다. 조절 손잡이를 누르면 (lock) 압력 셋팅 값이 변하는 것을 완전히 방지할 수 있고, 손잡이를 앞으로 당기면 (unlock) 자유롭게 원하는 압력으로 다시 셋팅 할 수 있습니다.

* 주의 : 크린라인이 아닌 일반 라인에 사용 할 경우 반드시 필터링(gas 7 μ m~15 μ m, water 15 μ m~80 μ m)을 하여야 하며, 그렇지 않을 경우 바로 고장의 원인이 됩니다. 모든 제품은 필터링하여 사용하면 A/S 비용 절감과 제품의 수명연장에 많은 도움이 됩니다.

Specifications

In/Outlet Port Size	1/4" FNPT / Gauge port: 1/4" NPT
Body	072S-0000-1S: Stainless Steel 316L 072B-0000-1S: Nickel Plated Brass
Bonnet	Nickel Plated Brass (Standard) / Stainless Steel (Option)
Diaphragm	Stainless Steel 316L
Main Valve	Stainless Steel 316L
Valve Spring	Stainless Steel 316L
Valve Seat	Teflon (Kel-F, Polyimide, etc.: optional)
Maximum Inlet Pressure	072x-0000-1S : 3,000psig (210bar) 072x-0000-1S-5 : 600psig (42bar)
Outlet Pressure Range	25(1.7bar), 50(3.4bar), 100(7bar), 250(17bar), 500psig(35bar)
Design Proof Pressure	150% of maximum rated
Leakage	to 2x10 ⁻⁸ atmcc/secHeliumavailable
Operating Temperature	-40°C to +70°C(-40°F to +160°F) (Standard) H1 option: up to +120°C (Optional) H2 option: up to +250°C (Optional)
Flow Capacity	Cv = 0.06 (Standard), 0.2 (Option)
Other Options	CGA, Pressure Gauge, etc.
Weight	Approx. 1.2kgs

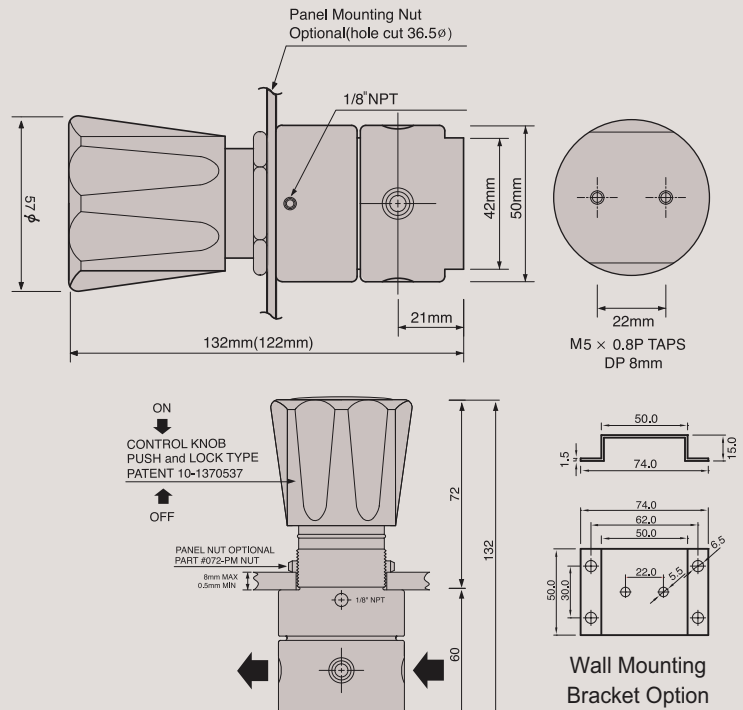
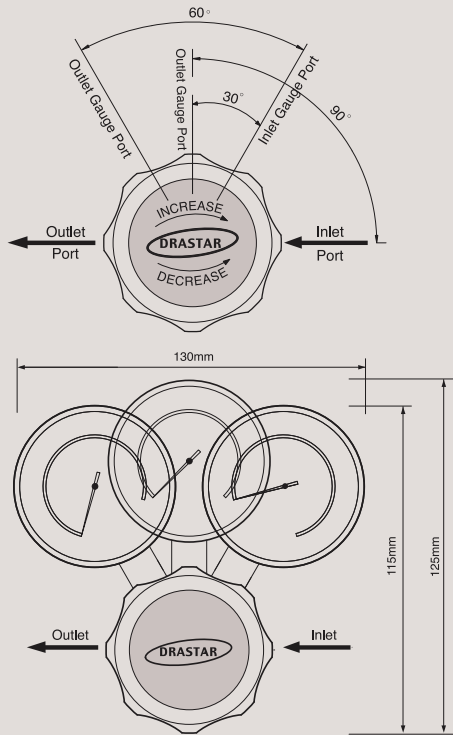
REFERENCE

Contents in the catalogue including specifications, performance data, etc. can be changed without prior notice in the course of continuous upgrading and improvement of the products.

사양서와 성능데이터 등 카다록에 있는 내용은 당사 제품의 지속적인 업그레이드 및 개선의 과정에서 사전 예고 없이 변경될 수 있습니다.

INSTALLATION DIMENSIONS
METRIC EQUIVALENTS ARE IN PARENTHESES

■ GAUGE PORT OPTIONS



072 Series is a 1/4" NPT type single-stage low pressure reducing regulator being most extensively used for gas cylinder and precision industry.

With DRASTAR's patented (patent 10-1086199) "push and lock type handle", you can operate it easily and stably; "locking" by pushing down the handle will prevent any slight change of pre-set pressure value, which could possibly be caused by any vibration from gas pipeline or ambient applications and the other way "unlocking" by pulling it back enables you to adjust the pressure value freely again.

Features & Applications

- Inlet pressures are 3000psig (210bar) or 600psig (42bar) and outlet pressures are 25psig (1.7bar) ~ 500psig (35bar)
- Panel mounting nut or wall mounting bracket available as option
- Design proof pressure: 150% of maximum rated
- Applicable for research labs, industrial gas control, gas cylinder, general gas line, bulk gas line, analytical application, ultra-pure gases, mixing gases, corrosive gases as well as liquid lines.
- 2-ports, 3-ports, 4-ports and 5-ports, 6-ports available

※ DRASTAR's all pressure regulators are assembled, cleaned, inspected, and packed in clean-rooms equipped with clean bench, helium detector, particle counter, ultrasonic cleaner, ultrapure water system, vacuum packaging machine, etc. through oxygen cleaning procedure in compliance with process and regulations indicated in CGA 4.1. and or ASTM G-93 and are free of any grease or oils.

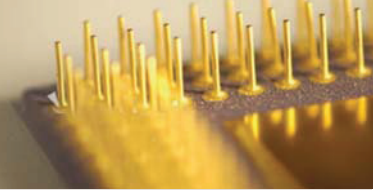
※ **Caution:** Filtering (gas 7µm~15µm, water 15µm~80µm) is a MUST to use in the general gas application other than high purity gases. Otherwise, it may cause a failure to the regulators. It is strongly recommended to install filter for extension of life span and saving the maintenance expense.

ORDERING INFORMATION

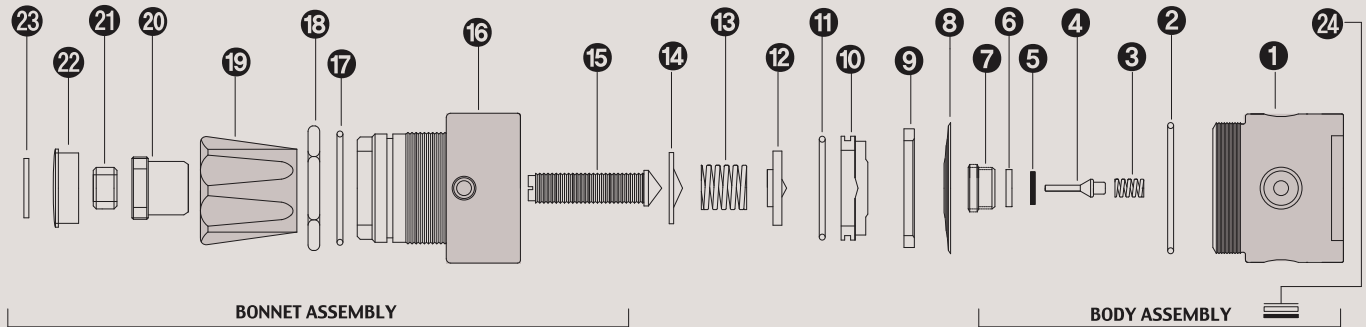
(W)072 S - 0025 L - 1S H - 5 - V - H1

BASIS SERIES NUMBER	BODY MATERIAL	OUTLET PRESSURE RANGE	PORT TYPE	FLOW CAPACITY	DIAPHRAGM MATERIAL	INLET PRESSURE	SELF VENTING	HIGH TEMPERATURE
Standard Inlet Pressure 3000psig (210 bar)	B = Brass S = Stainless Steel 316L	0025 = 25psi(1.7bar) 0050 = 50psi(3.5bar) 0100 = 100psi(7bar) 0250 = 250psi(17bar) 0500 = 500psi(35bar)	A = 2-Ports L = 3-Ports C = 4-Ports W = 5-Ports R = 3-Ports M = 4-Ports T = 4-Ports Y = 4-Ports X = 6-Ports	1 = 1/4" NPT S = Cv 0.06 Standard O = Cv 0.2 Optional	STS 316L Standard H = Hastelloy-C Optional	5 = Inlet 600psi(42bar) Optional	V = Self-Venting Optional	H1 = +120° C H2 = +250° C H3 = +320° C Optional

※ Note : 1) (W) model is only for liquid and water. 2) H1, H2, H3 option is not available for brass products.



072 SERIES PART LIST



STANDARD MODEL SERIES

Item No.	Description	Part No.	Model Application
01	Body	072-02-01	02-01 Stainless Steel 316L body / 02-02 Brass body
02	Boby O-Ring	072-02-00	All Model Same
03	Valve Spring	072-04-01	04-01 STS 316L / 04-03 Hastelloy-C-22 / 04-04 Monel
04	Main Valve	072-06-01	06-01 STS 316L
05	Valve Seat	072-10-01	10-01 PFA / 10-05 Vespel / 10-06 Peek
06	Valve Seat Cartridge	072-08-01	08-01 Stainless Steel 316L
07	Locking Screw	072-12-01	All Model Same
08	Diaphragm	072-16-01	16-01 STS 316L / 16-02 Hastelloy C-22
09	Diaphragm Plate	072-22-02	All Model Same
10	Back-up Plate	072-26-03	All Model Same
11	Back-up Plate O-Ring	072-28-01	All Model Same
12	Spring Plate	072-30-01	All Model Same
13	Load Spring	072-38-01	11-01 25psi / 11-02 50psi / 11-03 100psi / 11-05 250psi / 11-07 500psi
14	Pivot	072-40-01	All Model Same
15	Adjusting Screw	072-42-01	All Model Same
16	Bonnet	072-44-02	44-01 Stainless steel 316L / 44-02 Brass
17	Push & Lock O-Ring	072-46-01	All Model Same
18	Panel mount Nut	072-48-01	All Model Same
19	Control Knob	072-50-01	50-01 ABS / 50-04 Aluminum Control knob
20	Push & Lock Handle nut	072-52-01	All Model Same
21	Locking Nut	072-54-01	All Model Same
22	Name Cap	072-56-01	56-01 ABS
23	Name Cap Plate	072-58-01	58-01 25psi/58-02 50psi/58-03 100psi/58-04 200psi/58-06 350psi/58-07 500psi
24	Filter Assembly	072-60-01	All Model Same



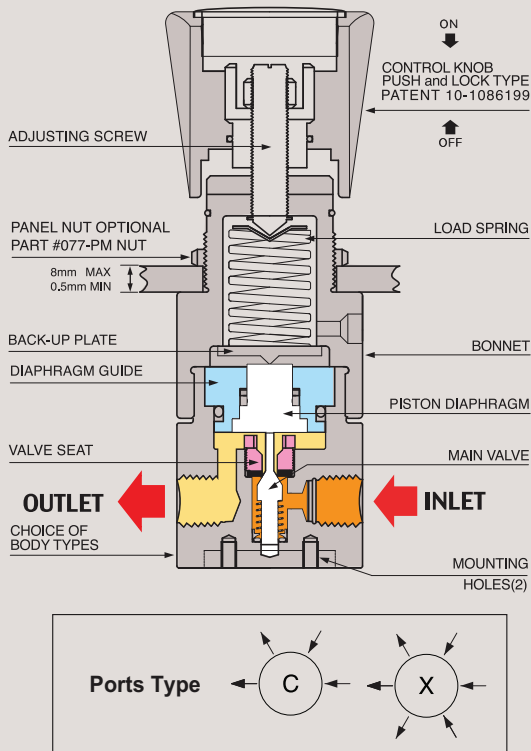


082 SERIES

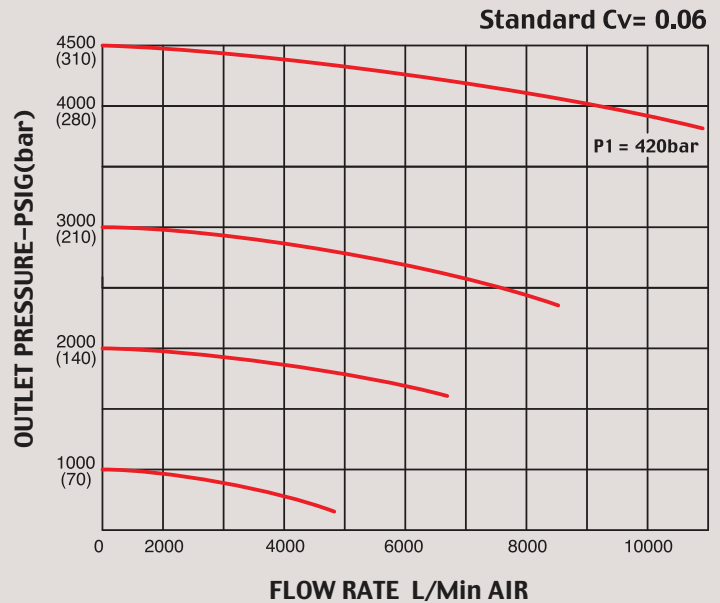
High Pressure Reducing Regulators



FUNCTIONAL SCHEMATIC



FLOW CHART



High Pressure NPT type (1/4")

082시리즈는 가스실린더 및 모든 고압가스를 안전하고 편리하게 사용할 수 있도록 개발된 고압가스 전용 레귤레이터 시리즈입니다.

- 당사가 독자 개발한 Piston-Diaphragm 방식을 채택하여 고압가스를 더욱 더 안전하고 편리하게 사용할 수 있습니다.
- 본체와 내부의 모든 부품이 Stainless Steel 316L로 이루어진 082S 모델은 각종 고순도 가스, 부식성 가스, 제약 및 실험실, 연구소 등에 폭 넓게 사용되며, 가스 및 액체 등에서 안심하고 사용할 수 있습니다.
- 입구 압력은 6000psig(420bar)이고 출구 압력은 최저 70psi(5bar) 부터 최대 4500psi(310bar)까지 사용 할 수 있는 NPT 1/4" type 4-Ports 전용 Regulator 입니다.
- 사용 중 가스라인이나 외부의 미세 진동 등으로 인하여 초기 압력 셋팅 값이 미세하게 변동하는 현상을 완전히 해결한 당사 Push and Lock 조절 손잡이 (당사 특허 #10-1086199)를 적용하여 사용하기에 더욱 편리합니다. 조절 손잡이를 누르면 (lock) 압력 셋팅 값이 변하는 것을 완전히 방지할 수 있고, 손잡이를 앞으로 당기면 (unlock) 자유롭게 원하는 압력으로 다시 셋팅 할 수 있습니다.

* 주의 : 크린라인이 아닌 일반 라인에 사용 할 경우 반드시 필터링(gas 7 μ m~15 μ m, water 15 μ m~80 μ m)을 하여야 하며, 그렇지 않을 경우 바로 고장의 원인이 됩니다. 모든 제품은 필터링하여 사용하면 A/S 비용 절감과 제품의 수명연장에 많은 도움이 됩니다.

Specifications

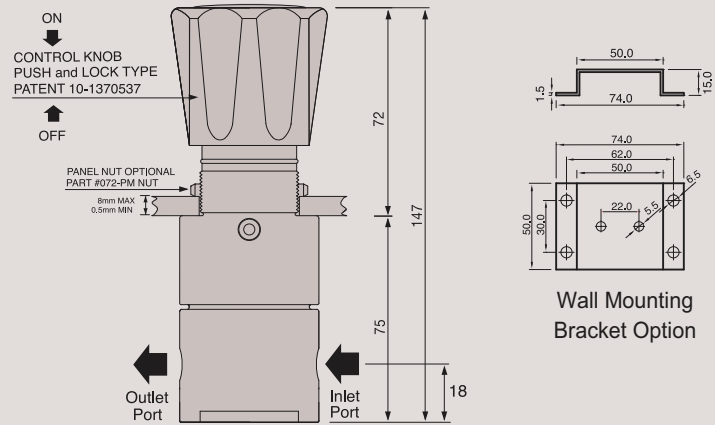
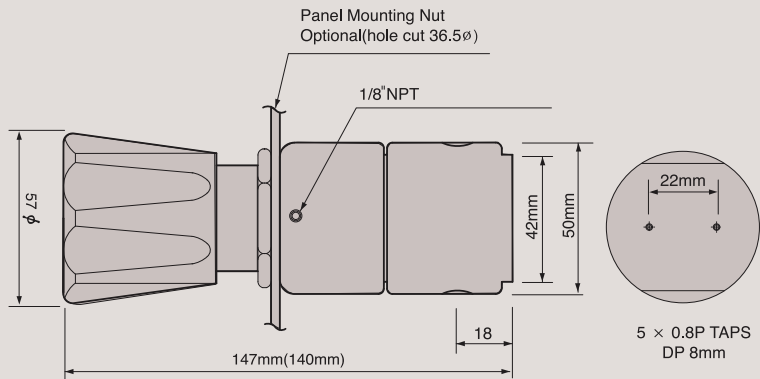
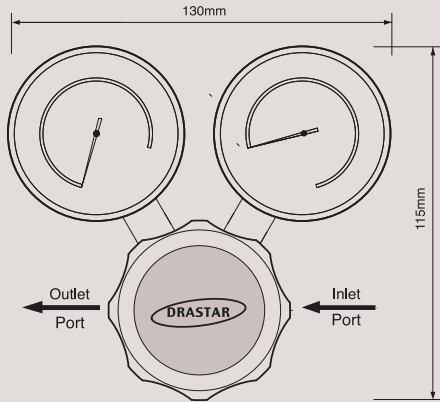
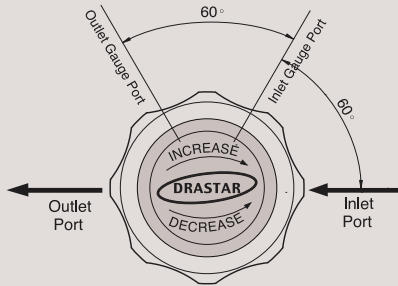
In/Outlet Port Size	1/4" FNPT / Gauge port: 1/4" NPT
Body	082S-0000-1S: Stainless Steel 316L 082B-0000-1S: Nickel Plated Brass
Bonnet	Nickel Plated Brass (Standard) / Stainless Steel (Option)
Diaphragm	Stainless Steel 316L
Main Valve	Stainless Steel 316L
Valve Spring	Stainless Steel 316L
Valve Seat	Teflon (Kel-F, Polyimide, etc.: optional)
Maximum Inlet Pressure	6,000psig (420bar)
Outlet Pressure Range	650(45bar), 1000(70bar), 2000(140bar), 3000(210bar), 4500psig(310bar)
Design Proof Pressure	150% of maximum rated
Leakage	to 2x10 ⁻⁸ atmcc/secHeliumavailable
Operating Temperature	-40°C to +70°C(-40°F to +160°F) (Standard) H1 option: up to +120°C (Optional) H2 option: up to +250°C (Optional)
Flow Capacity	Cv = 0.06 (Standard), 0.2 (Option)
Other Options	CGA, Pressure Gauge, etc.
Weight	Approx. 1.2kgs

REFERENCE

Contents in the catalogue including specifications, performance data, etc. can be changed without prior notice in the course of continuous upgrading and improvement of the products. 사양서와 성능데이터 등 카탈로그에 있는 내용은 당사 제품의 지속적인 업그레이드 및 개선의 과정에서 사전 예고 없이 변경될 수 있습니다.

INSTALLATION DIMENSIONS
METRIC EQUIVALENTS ARE IN PARENTHESES

■ GAUGE PORT OPTIONS



082 Series is a 1/4" NPT type single-stage high pressure reducing regulator designed to use for gas cylinder and all high pressure gases more easily and safely with "Piston-Diaphragm" which Drastar specially developed.

With DRASTAR's patented (patent 10-1086199) "push and lock type handle", you can operate it easily and stably; "locking" by pushing down the handle will prevent any slight change of pre-set pressure value, which could possibly be caused by any vibration from gas pipeline or ambient applications and the other way "unlocking" by pulling it back enables you to adjust the pressure value freely again.

Features & Applications

- 1/4" NPT type high pressure regulator
- Drastar's specially developed "piston-diaphragm" mounted
- Inlet pressure is 6000psi(420bar) and outlet pressures are 1000psig (70 bar) ~ 4500psig(310bar)
- Panel mounting nut or wall mounting bracket available as option • Design proof pressure: 150% of maximum rated
- Applicable for gas and liquid in the field of various high purity gases, corrosive gases, pharmaceutical line, research labs, etc. (082S model made of stainless steel 316L for its internals and body)

※ DRASTAR's all pressure regulators are assembled, cleaned, inspected, and packed in clean-room equipped with clean bench, helium detector, particle counter, ultrasonic cleaner, ultrapure water system, vacuum packaging machine, etc. through oxygen cleaning procedure in compliance with process and regulations indicated in CGA 4.1. and or ASTM G-93 and are free of any grease or oils.

※ **Caution:** Filtering (gas 7µm~15µm, water 15µm~80µm) is a MUST to use in the general gas application other than high purity gases. Otherwise, it may cause a failure to the regulators. It is strongly recommended to install filter for extension of life span and saving the maintenance expense

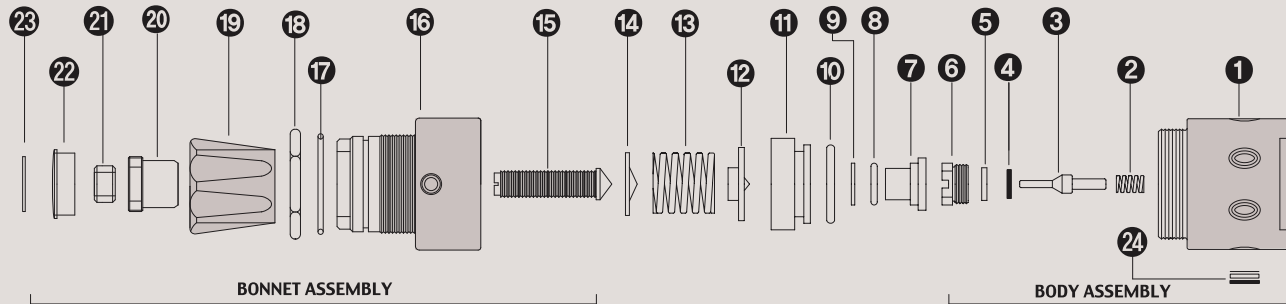
ORDERING INFORMATION

082 S - 1000 - 1S H - V - H1

BASIS SERIES NUMBER	BODY MATERIAL	OUTLET PRESSURE RANGE	FLOW CAPACITY	DIAPHRAGM MATERIAL	SELF VENTING	HIGH TEMPERATURE
Standard Inlet Pressure 6000psig (420 bar)	B = Brass S = Stainless Steel 316L	0650 = 5-650psi (0.4-45bar) 1000 = 10-1000psi (0.7-70bar) 2000 = 20-2000psi (1.5-140bar) 3000 = 30-3000psi (2.0-210bar) 4500 = 30-4500psi (3.0-310bar)	1 = 1/4" NPT S = Cv 0.06 Standard O = Cv 0.2 Optional	STS 316L Standard H = Hastelloy-C Optional	V = Self-Venting Optional	H1 = +120° C H2 = +250° C H3 = +320° C Optional

※ Note : 1) Outlet pressure 4500 model is not available with self-venting(V) 2) H1, H2, H3 option is not available for brass products.

082 SERIES PART LIST



STANDARD MODEL SERIES

Item No.	Description	Part No.	Model Application
01	Body	082-02-01	02-01 Stainless Steel 316L / 02-02 Brass Body / 02-03 Monel
02	Valve Spring	082-04-01	04-01 STS 316L / 04-03 Hastelloy C-22 / 04-04 Monel
03	Main Valve	082-06-01	06-01 STS 316L / 06-03 Hastelloy C-275 / 04-04 Monel
04	Valve Seat	082-10-01	10-01 PFA / 10-05 Vespel / 10-06 Peek
05	Valve Seat Cartridge	082-08-01	All Model Same
06	Locking Screw	082-12-01	All Model Same
07	Piston Diaphragm	082-18-01	All Model Same
08	Piston Diaphragm O-ring	082-18-00	All Model Same
09	Diaphragm Teflon Ring	082-18-00	All Model Same
10	Diaphragm Guide O-ring	082-18-00	All Model Same
11	Piston Diaphragm Guide	082-20-01	20-01 Series Stainless steel 316L / 20-02 Brass
12	Spring Plate	082-30-01	All Model Same
13	Load Spring	082-38-01	38-08 1000psi / 38-09 2000psi / 38-10 3000psi / 38-11 4500psi
14	Pivot	082-40-01	All Model Same
15	Adjusting Screw	082-42-01	All Model Same
16	Bonnet	082-44-02	44-02 Brass / 44-01 Stainless steel 304 Bonnet Optional
17	Push & Lock O-Ring	082-46-01	All Model Same
18	Panel mount Nut	082-48-01	All Model Same
19	Control Knob	082-50-01	50-01 ABS / 50-04 Aluminum Control knob Optional)
20	Push & Lock Handle nut	082-52-01	All Model Same
21	Locking Nut	082-54-01	All Model Same
22	Name Cap	082-56-01	56-01 ABS
23	Name Cap Plate	082-58-07	58-08 1000psi / 58-09 2000psi / 58-10 3000psi / 58-11 4500psi
24	Filter Assembly	082-60-02	All Model Same

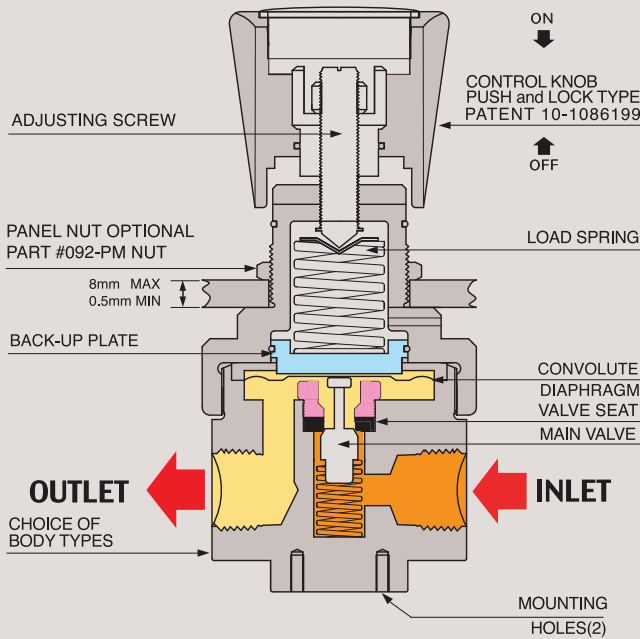


092 SERIES

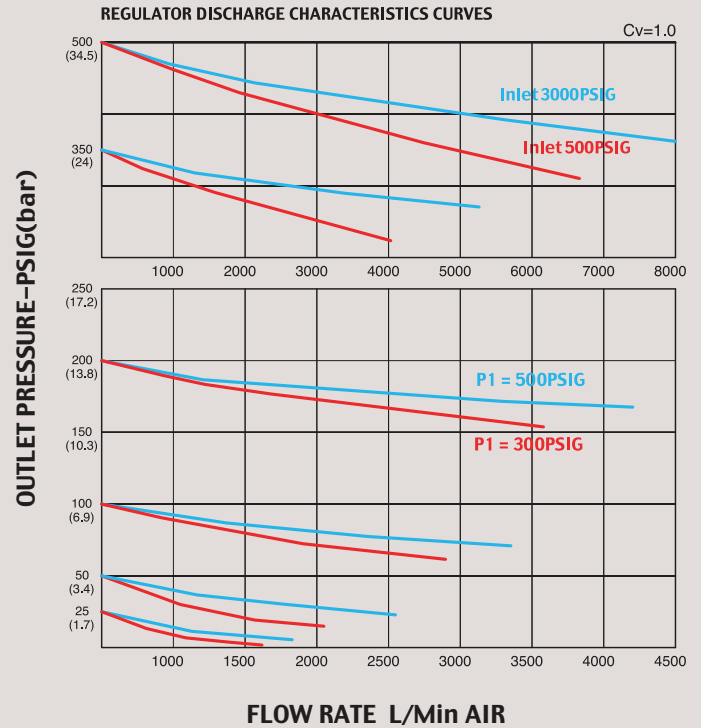
High Flow Low Pressure Reducing Regulators



FUNCTIONAL SCHEMATIC



FLOW CHART



Single Stage High-flow Low Pressure NPT type (1/2")

092시리즈는 정밀 배관 라인에서 고 유량을 필요로 하는 작업환경에서 가장 많이 사용되는 1/2" NPT type Pressure Reducing Regulators입니다.

- 본체와 내부의 모든 부품은 Stainless Steel 316L로 이루어졌으며, 일반가스 라인, Bulk Gas Line, 실험실, 분석용 특수 가스, 또는 고순도 가스, 믹싱용 가스, 그리고 부식성 기체와 액체 등에서 모두 사용할 수 있도록 설계 제작되었습니다.
- 입구 압력은 최대 3000psig(210bar)이고 출구압력은 모델에 따라 5psi(0.3bar) ~ 최대 500psig(35bar)까지 사용할 수 있고 용도에 따라 2-ports, 3-ports 또는 4-ports를 선택 가능합니다.
- 사용 중 가스라인이나 외부의 미세 진동 등으로 인하여 초기 압력 셋팅 값이 미세하게 변동하는 현상을 완전히 해결한 당사 Push and Lock 조절 손잡이 (당사 특허 #10-1086199)를 적용하여 사용하기에 더욱 편리합니다. 조절 손잡이를 누르면 (lock) 압력 셋팅 값이 변하는 것을 완전히 방지할 수 있고, 손잡이를 앞으로 당기면 (unlock) 자유롭게 원하는 압력으로 다시 셋팅 할 수 있습니다.

* 주의 : 크리라인이 아닌 일반 라인에 사용 할 경우 반드시 필터링(gas 7 μ m~15 μ m, water 15 μ m~80 μ m)을 하여야 하며, 그렇지 않을 경우 바로 고장의 원인이 됩니다. 모든 제품은 필터링하여 사용하면 A/S 비용 절감과 제품의 수명연장에 많은 도움이 됩니다.

Specifications

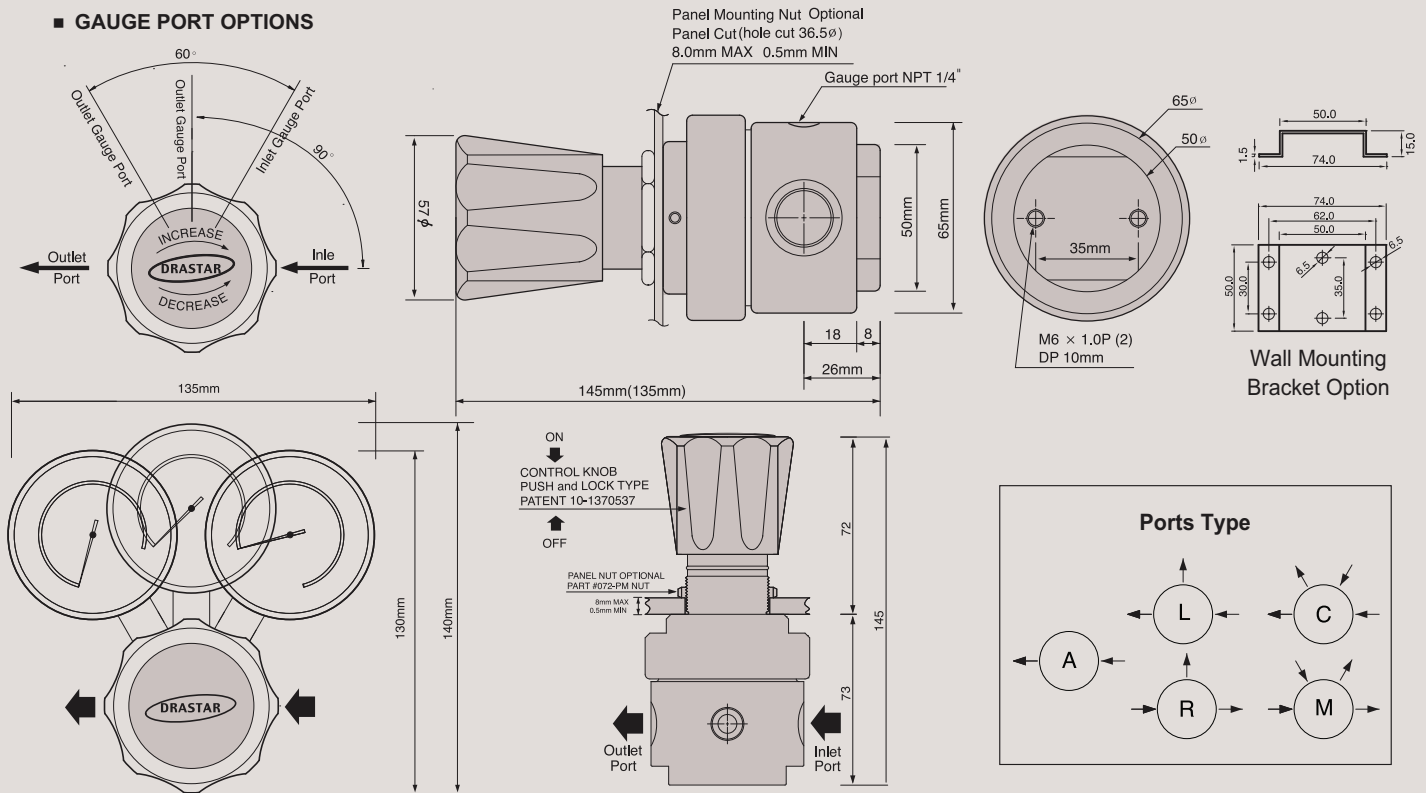
In/Outlet Port Size	1/2" FNPT / Gauge port: 1/4" NPT
Body	Stainless Steel 316L
Bonnet	Nickel Plated Forged Brass (Standard) / Stainless Steel (Option)
Diaphragm	Stainless Steel 316L
Main Valve	Stainless Steel 316L
Valve Spring	Stainless Steel 316L
Valve Seat	Teflon (Kel-F, Polyimide, etc.: optional)
Maximum Inlet Pressure	092-0000-1S : 3,000psig (210bar) 092-0000-1S-5 : 600psig (42bar)
Outlet Pressure Range	25(1.7bar), 50(3.5bar), 100(7bar), 200(14bar), 350(24bar), 500psig(34bar)
Design Proof Pressure	150% of maximum rated
Leakage	to 2x10 ⁻⁸ atmcc/secHeliumavailable
Operating Temperature	-40°C to +70°C(-40°F to +160°F) (Standard) H1 option: up to +120°C (Optional) H2 option: up to +250°C (Optional)
Flow Capacity	Cv = 1.0
Weight	Approx. 1.6kgs

REFERENCE

Contents in the catalogue including specifications, performance data, etc. can be changed without prior notice in the course of continuous upgrading and improvement of the products.
사양서와 성능데이터 등 카달로그에 있는 내용은 당사 제품의 지속적인 업그레이드 및 개선의 과정에서 사전 예고 없이 변경될 수 있습니다.

INSTALLATION DIMENSIONS
METRIC EQUIVALENTS ARE IN PARENTHESES

■ GAUGE PORT OPTIONS



092 Series is a 1/2" NPT type single-stage pressure reducing regulator specially designed to use for high-flow low-pressure applications. Made of stainless steel for body and all internal parts, 092 series has wide range of applications.

With DRASTAR's patented (patent #10-1086199) "push and lock type handle", you can operate it easily and stably: "locking" by pushing down the handle will prevent any slight change of pre-set pressure value, which could possibly be caused by any vibration from gas pipeline or ambient applications and the other way "unlocking" by pulling it back enables you to adjust the pressure value freely again.

Features & Applications

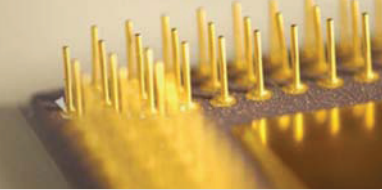
- 1/2" NPT type high flow low pressure regulator
 - Inlet pressures are 3000psig(210bar) or 600psi(42bar) and outlet pressures are 25psig(1.7 bar) ~ 500psig(35bar)
 - Panel mounting nut or wall mounting bracket available as option • Design proof pressure: 150% of maximum rated
 - Applicable for general gas line, bulk gas line, research labs, specialty gases for analytical application, high purity gases, mixing gases, and corrosive gases as well as liquids.
- ※ DRASTAR's all pressure regulators are assembled, cleaned, inspected, and packed in clean-room equipped with clean bench, helium detector, particle counter, ultrasonic cleaner, ultrapure water system, vacuum packaging machine, etc. through oxygen cleaning procedure in compliance with process and regulations indicated in CGA 4.1. and or ASTM G-93 and are free of any grease or oils.
- ※ **Caution:** Filtering (gas 7 μm~15 μm, water 15 μm~80 μm) is a MUST to use in the general gas application other than high purity gases. Otherwise, it may cause a failure to the regulators. It is strongly recommended to install filter for extension of life span and saving the maintenance expense

ORDERING INFORMATION

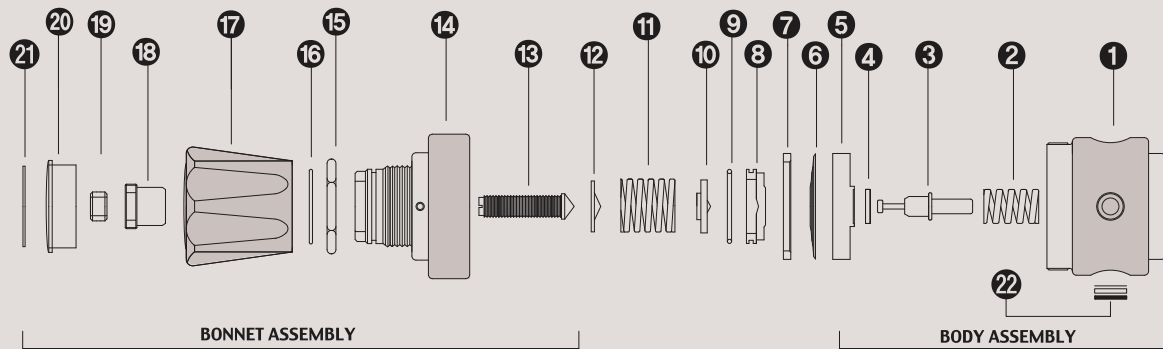
(W)092 - 0025 L - 1S H - 5 - V - H1

BASIS SERIES NUMBER	OUTLET PRESSURE RANGE	PORT TYPE	FLOW CAPACITY	DIAPHRAGM MATERIAL	INLET PRESSURE	SELF VENTING	HIGH TEMPERATURE
Standard Inlet Pressure 3000psig (210 bar)	0025 = 25psi(1.7bar) 0050 = 50psi(3.5bar) 0100 = 100psi(7bar) 0200 = 200psi(14bar) 0350 = 350psi(24bar) ※ 0500 = 500psi(34bar)	A = 2-Ports L = 3-Ports C = 4-Ports	1 = 1/2" NPT S = Cv 1.0 Standard	STS 316L Standard H = Hastelloy-C	5 = Inlet 600psi(42bar)	V = Self-Venting	H1 = +120°C H2 = +250°C H3 = +320°C
Body : STS 316L Only		R = 3-Ports M = 4-Ports		Optional	Optional	Optional	Optional

※ Note : 1) (W) model is only for liquid and water. 2) ※ 500psi model must be used for W model only. 3) H1, H2, H3 option is not available for brass products.

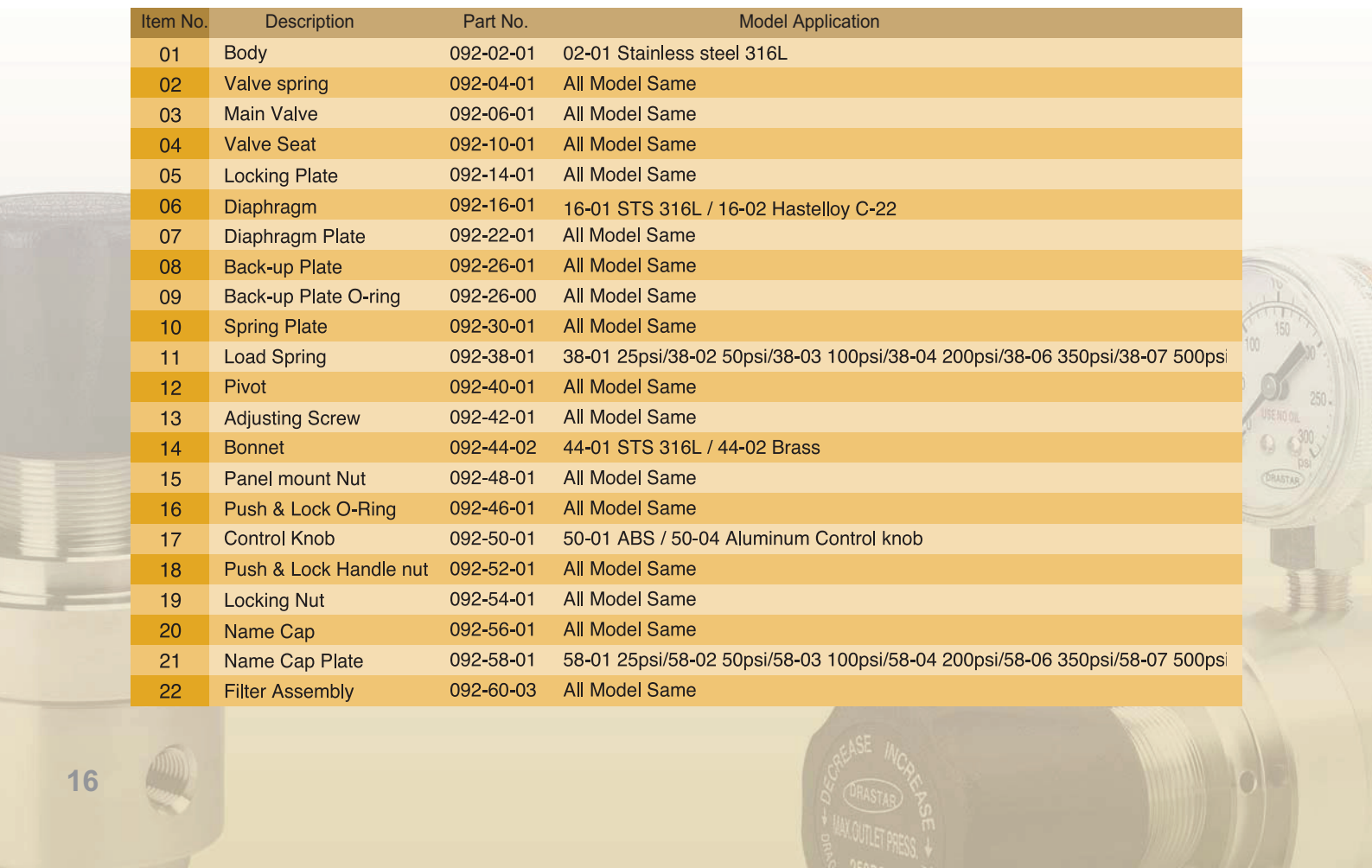


092 SERIES PART LIST



STANDARD MODEL SERIES

Item No.	Description	Part No.	Model Application
01	Body	092-02-01	02-01 Stainless steel 316L
02	Valve spring	092-04-01	All Model Same
03	Main Valve	092-06-01	All Model Same
04	Valve Seat	092-10-01	All Model Same
05	Locking Plate	092-14-01	All Model Same
06	Diaphragm	092-16-01	16-01 STS 316L / 16-02 Hastelloy C-22
07	Diaphragm Plate	092-22-01	All Model Same
08	Back-up Plate	092-26-01	All Model Same
09	Back-up Plate O-ring	092-26-00	All Model Same
10	Spring Plate	092-30-01	All Model Same
11	Load Spring	092-38-01	38-01 25psi/38-02 50psi/38-03 100psi/38-04 200psi/38-06 350psi/38-07 500psi
12	Pivot	092-40-01	All Model Same
13	Adjusting Screw	092-42-01	All Model Same
14	Bonnet	092-44-02	44-01 STS 316L / 44-02 Brass
15	Panel mount Nut	092-48-01	All Model Same
16	Push & Lock O-Ring	092-46-01	All Model Same
17	Control Knob	092-50-01	50-01 ABS / 50-04 Aluminum Control knob
18	Push & Lock Handle nut	092-52-01	All Model Same
19	Locking Nut	092-54-01	All Model Same
20	Name Cap	092-56-01	All Model Same
21	Name Cap Plate	092-58-01	58-01 25psi/58-02 50psi/58-03 100psi/58-04 200psi/58-06 350psi/58-07 500psi
22	Filter Assembly	092-60-03	All Model Same

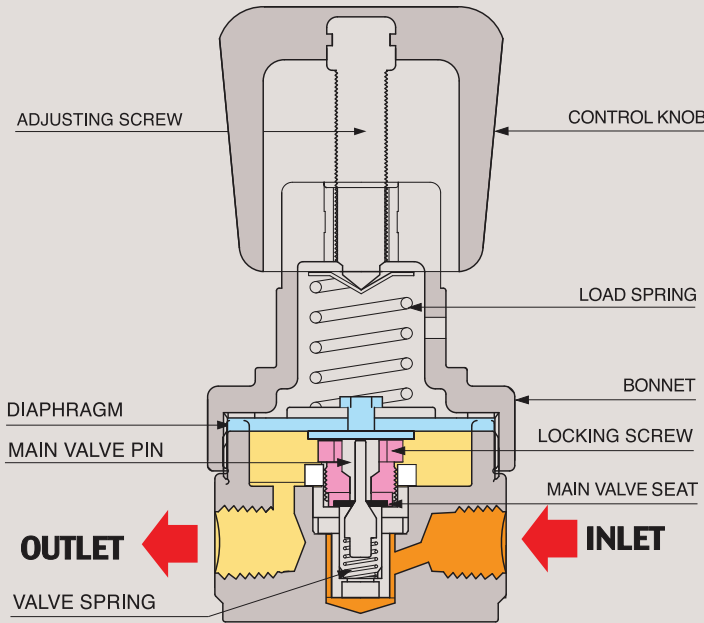


DR60 SERIES

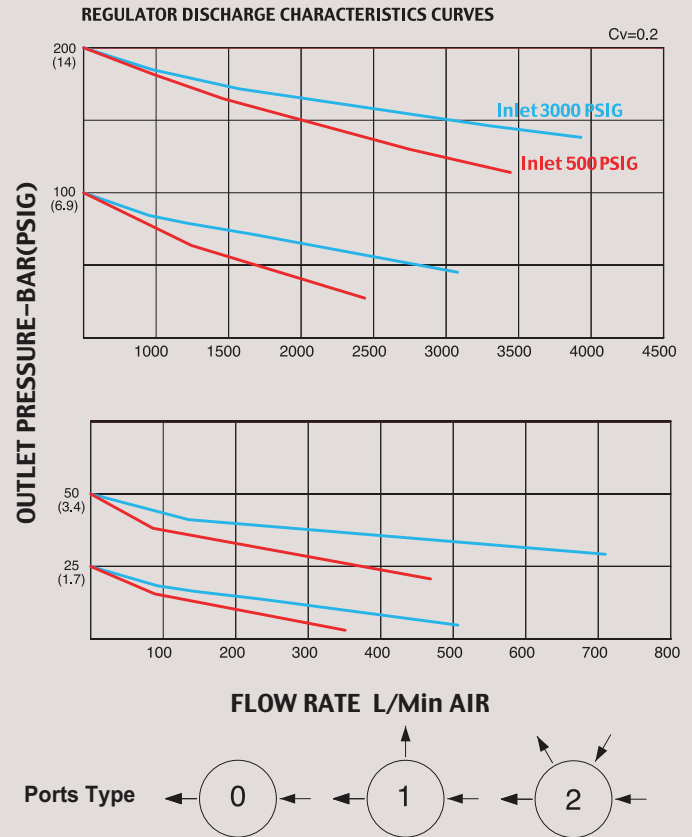
Single Stage Low Pressure Regulators



FUNCTIONAL SCHEMATIC



FLOW CHART



Single Stage Low Pressure NPT type (1/4")

DR60시리즈는 배관 및 산업용 가스를 사용하기에 가장 적합하고 경제적인 모델입니다.

- 1/4" NPT 타입의 경제적 범용 모델로서 특히, 선택하는 압력계(Gauge)가 기본으로 조립하여 출고되는 제품입니다.
- 본체는 니켈 도금 브라스(Brass), 내부 부품은 Stainless Steel 또는 Brass로 구성되며 Valve Seat는 Teflon, 다이어프램은 특수고무 재질을 사용하여 경 제성과 함께 Co2 가스 등을 사용하여도 내구성과 안전성이 뛰어난 제품입니다.
- 입구 압력은 최대 3000psi(210bar)이고 출구압력은 모델에 따라 5psi(0.3bar)에서 최대 200psi (14bar)까지 사용하기에 적합한 제품이며, 용도에 따라 2-ports, 3-ports 또는 4-ports를 선택할 수 있습니다.

Specifications

In/Outlet Port Size	1/4" FNPT / Gauge port: 1/4" NPT
Body	Nickel Plated Forged Brass
Bonnet	Zinc (Zn) Casting Nickel Plated
Diaphragm	Particular of Synthetic Rubber (NBR)
Main Valve	Stainless Steel 316L
Valve Spring	Stainless Steel
Valve Seat	Teflon
Maximum Inlet Pressure	3,000psig (210bar) / 600psig (42bar)
Outlet Pressure Range	25(1.7bar), 50(3.4bar), 100(7bar), 200psig (14bar)
Design Proof Pressure	150% of maximum rated
Leakage	to 2x10 ⁻⁶ atmcc/secHeliumavailable
Operating Temperature	-40°C to +70°C(-40°F to +160°F) (Standard)
Flow Capacity	Cv = 0.2
Other Options	Inlet CGA etc.
Weight	Approx. 1.0kgs

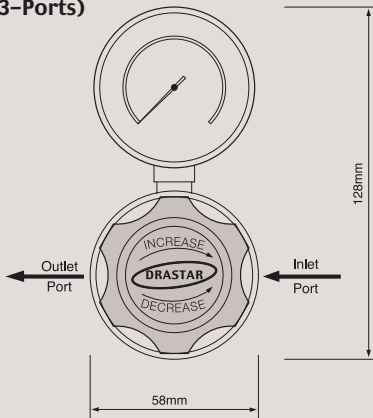
INSTALLATION DIMENSIONS

METRIC EQUIVALENTS ARE IN PARENTHESES

■ GAUGE PORT OPTIONS

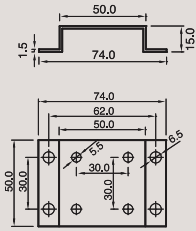
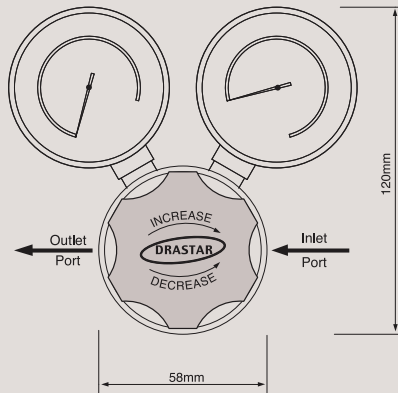
MODEL DR60-A025-1

(3-Ports)

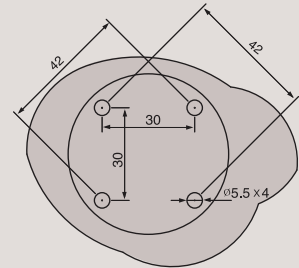


MODEL DR60-A025-2

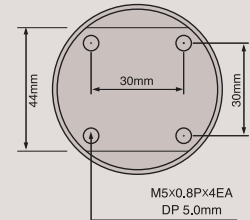
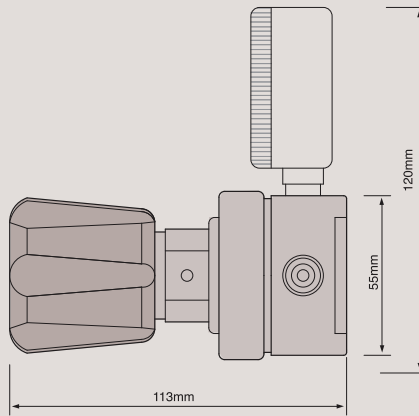
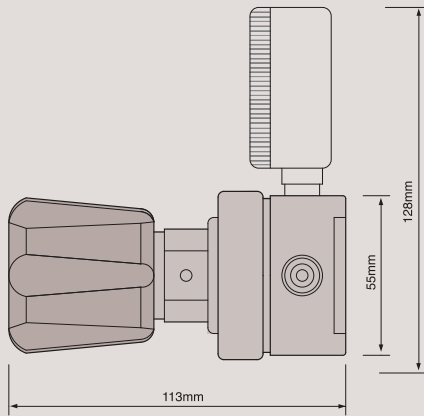
(4-Ports)



Wall Mounting Bracket Option



BRACKET CUT-OUTS



DR60 Series is a 1/4" NPT type single-stage pressure reducing regulator being widely used for general plumbing and industrial gases. Made of nickel plated brass for body and stainless steel or brass for internal parts, Teflon valve seat, and diaphragm of special rubber, DR60 series is an economical model with durability and safety as well.

Features & Applications

- 1/4" NPT type regulator
- Suitable for the general plumbing and industrial control fields
- Inlet pressures are 3000psi(210bar) or 600psi(42bar) and outlet pressures are 25psig (1.7bar), 50psig(3.5bar), 100psig(7bar), 200psig (14bar)
- Design proof pressure: 150% of maximum rated

※ DRASTAR' s all pressure regulators are assembled, cleaned, inspected, and packed in clean-room equipped with clean bench, helium detector, particle counter, ultrasonic cleaner, ultrapure water system, vacuum packaging machine, etc. through oxygen cleaning procedure in compliance with process and regulations indicated in CGA 4.1. and or ASTM G-93 and are free of any grease or oils.

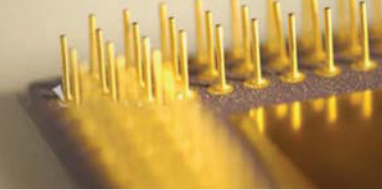
ORDERING INFORMATION

DR60 - A 025 - 1

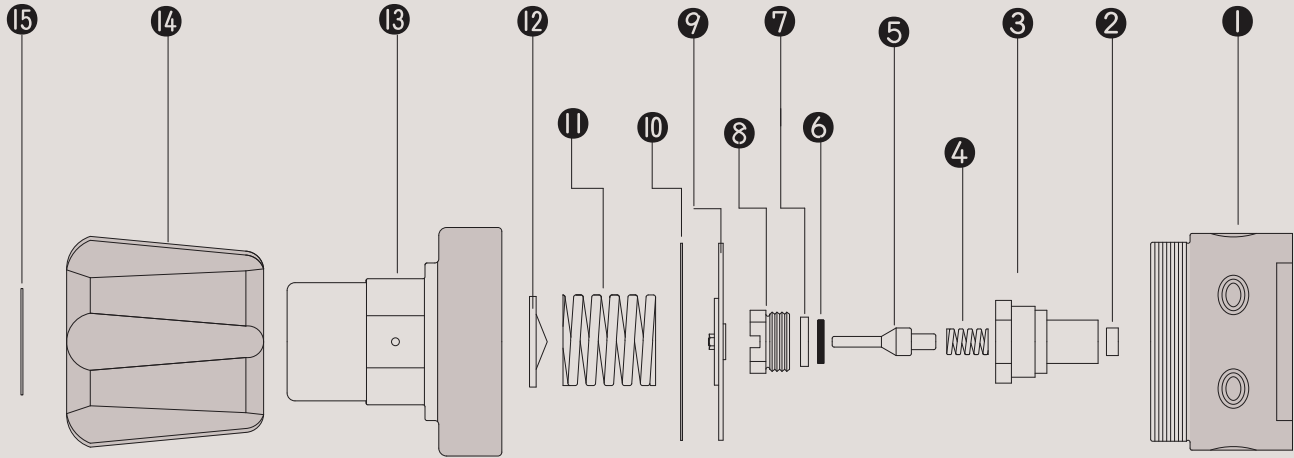
BASIS SERIES NUMBER	MAX. INLET PRESSURE	OUTLET PRESSURE RANGES	INLET OUTLET PORTS SIZE
DR60 Series	A = 3000psi(210bar) B = 600psi(42bar)	025 = 0-25psig (0-1.7bar) 050 = 0-50psig (0-3.5bar) 100 = 0-100psig (0-7bar) 200 = 0-200psig (0-14bar)	0 = 2-Ports 1 = 3-Ports 2 = 4-Ports

DR60

SERIES



DR60 SERIES PART LIST



STANDARD MODEL SERIES

Item No.	Description	Part No.	Model Application
01	Body	DR60-02-02	02-02 Brass
02	Cartridge Filter	DR60-62-01	All Model Same
03	Cartridge	DR60-66-01	All Model Same
04	Valve Spring	DR60-04-02	04-01 STS 304
05	Main Valve	DR60-06-01	06-01 STS 316L
06	Valve Seat	DR60-10-01	10-01 PFA
07	Valve Seat Cartridge	DR60-08-01	All Model Same
08	Locking Screw	DR60-12-03	All Model Same
09	Diaphragm Assembly	DR60-16-04	16-04 NBR / 16-05 EPDM
10	Gasket	DR60-16-00	All Model Same
11	Load Spring	DR60-38-01	38-01 25psi / 38-02 50psi / 38-03 100psi / 38-04 200psi
12	Pivot	DR60-40-01	All Model Same
13	Bonnet	DR60-44-03	All Model Same
14	Control Knob	DR60-50-03	All Model Same
15	Name Plate	DR60-56-00	All Model Same

